



BROOK GAMBLE



6 Springfield Road
, Eastbourne, BN22 8DY

Brook Gamble offer to the market this 2 bedroom mid-terrace home in the Seaside area of Eastbourne. The property enjoys a good sized Lounge/Dining Room, and Kitchen to the ground floor and the 2 Bedrooms and Bathroom on the first floor. There is a courtyard garden to the rear of the house along with nearby off street residents parking facilities. Further benefits include gas central heating and uPVC double glazing. The house is well located for access to Eastbourne Town Centre with its shops and mainline railway station along with Eastbourne Seafront. Viewing is considered essential to fully appreciate this home.

£239,950

6 Springfield Road

, Eastbourne, BN22 8DY



- Mid-Terrace House
- UPVC Double Glazing
- Close Schools & Shops
- 19'9 Through Lounge / Dining Room
- Courtyard garden
- Gas Central Heating
- Residents Parking

Entrance Hall

Lounge / Dining Room

19'9 into bay x 11'1 (6.02m into bay x 3.38m)

Kitchen

12'7 x 7 (3.84m x 2.13m)

First Floor Landing

Bedroom 1

9'11 x 11'2 (3.02m x 3.40m)

Bedroom 2

7'11 x 7'4 (2.41m x 2.24m)

Bathroom

Outside

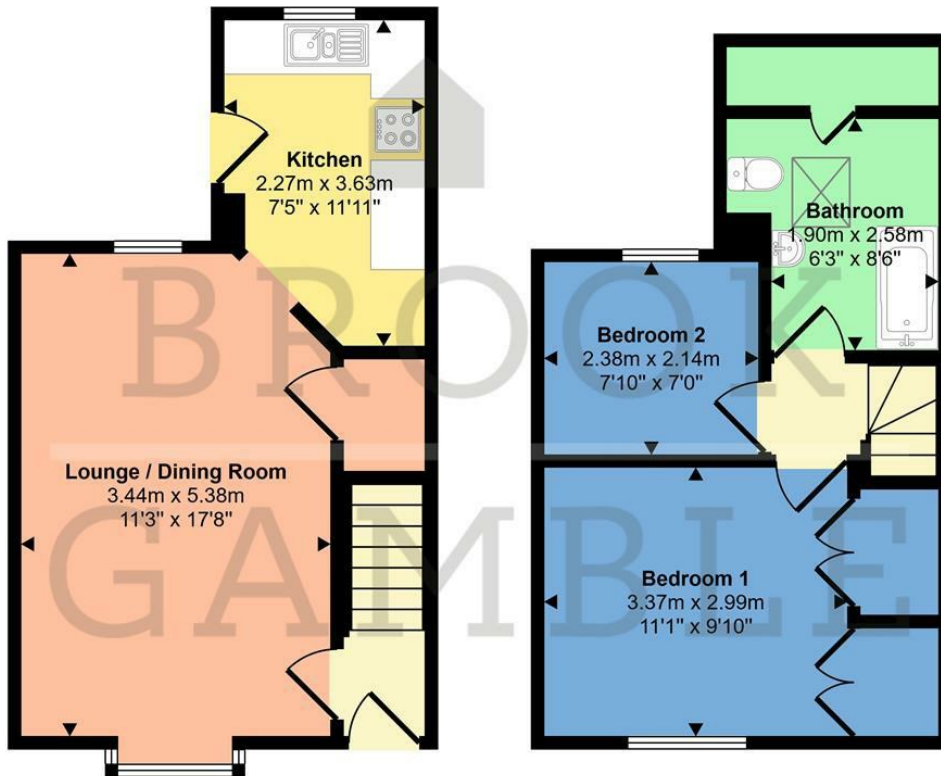


Directions



Floor Plan

Approx Gross Internal Area
59 sq m / 639 sq ft



Ground Floor
Approx 31 sq m / 329 sq ft

First Floor
Approx 29 sq m / 311 sq ft

This floorplan is only for illustrative purposes and is not to scale. Measurements of rooms, doors, windows, and any items are approximate and no responsibility is taken for any error, omission or mis-statement. Icons of items such as bathroom suites are representations only and may not look like the real items. Made with Made Snappy 360.

These particulars, whilst believed to be accurate are set out as a general outline only for guidance and do not constitute any part of an offer or contract. Intending purchasers should not rely on them as statements of representation of fact, but must satisfy themselves by inspection or otherwise as to their accuracy. No person in this firm's employment has the authority to make or give any representation or warranty in respect of the property.

